

# Showcasing the U-TURN Transport Collaboration platform

## Description

An IT platform based on a stable matching algorithm that provides transport companies with the ability to collaborate together, by offering spare capacity in their vehicles to others, or searching for other providers that are able to deliver goods on their behalf.

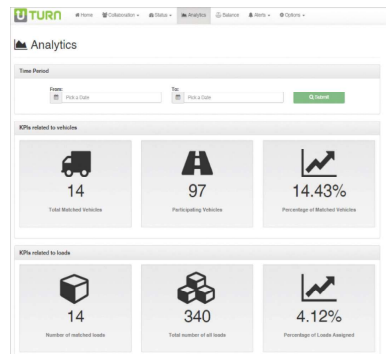
## Development Case Study

The prototype has been developed using a stable matching algorithm, over a 2 year period with industry stakeholders fully engaged in the process to ensure it meets their needs in terms of interface, relevance and benefits.

It has been used to highlight opportunities in food and beverage transport logistics in multiple supply chain and country scenarios.

Has received industry confirmation through user testing and is a key area of IP exploitation emerging from the U-TURN project.

The platform is designed to handle all the common parameters of transport logistics including; pick up and drop off locations, transport routing, load type (Chill, Frozen, Ambient), route timing, time restrictions, vehicle type and capacity.

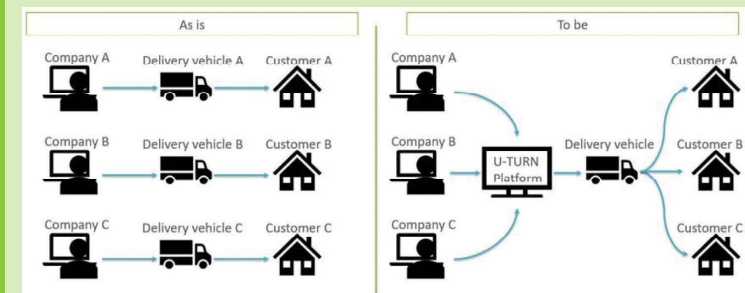


The 'Offer Spare Capacity' form includes the following fields:

- Transport Data:** Title, Starting Point, Vehicle Start (From/To), Pick-up Time (From/To), Load Type, Vehicle ID, Vehicle Engine Technology, Fuel, and Delivery Points.
- Spare Capacity:** Number of Pallets, Weight, Price/Pallet, Max Additional Deliveries, and a map for Delivery Points.

## Satisfied potential customers

"The updated location data entry process is excellent!!! You have reduced the assignment time and this tool is really awesome for the end-user. I am really excited! Well done to everyone involved" (3PL Company Routing Director)



## Technical Specification

Java SDKv1.8, Springv4.2.0, Angular v1.5.7, Bootstrap v3.3.6, JMT, MySQL v5.6

